

VENUE HIRE AT CASTLE HOWARD

A place like no other



CASTLE HOWARD





Welcome

Castle Howard is nestled in the idyllic Howardian Hills countryside in North Yorkshire, just 30 minutes from the historic city of York.

Castle Howard was built for entertaining, hosting countless guests from royalty to film stars in its 300-year history. We can offer a truly unique backdrop to an unforgettable event, with a mix of venues in the historic House, Gardens, Estate buildings or follies.

Venue hire directly contributes to the conservation and restoration of Castle Howard's historical buildings and natural landscape, so you can be assured your booking contributes to the preservation of this special place for future generations.

Host your event amongst 300 years of history

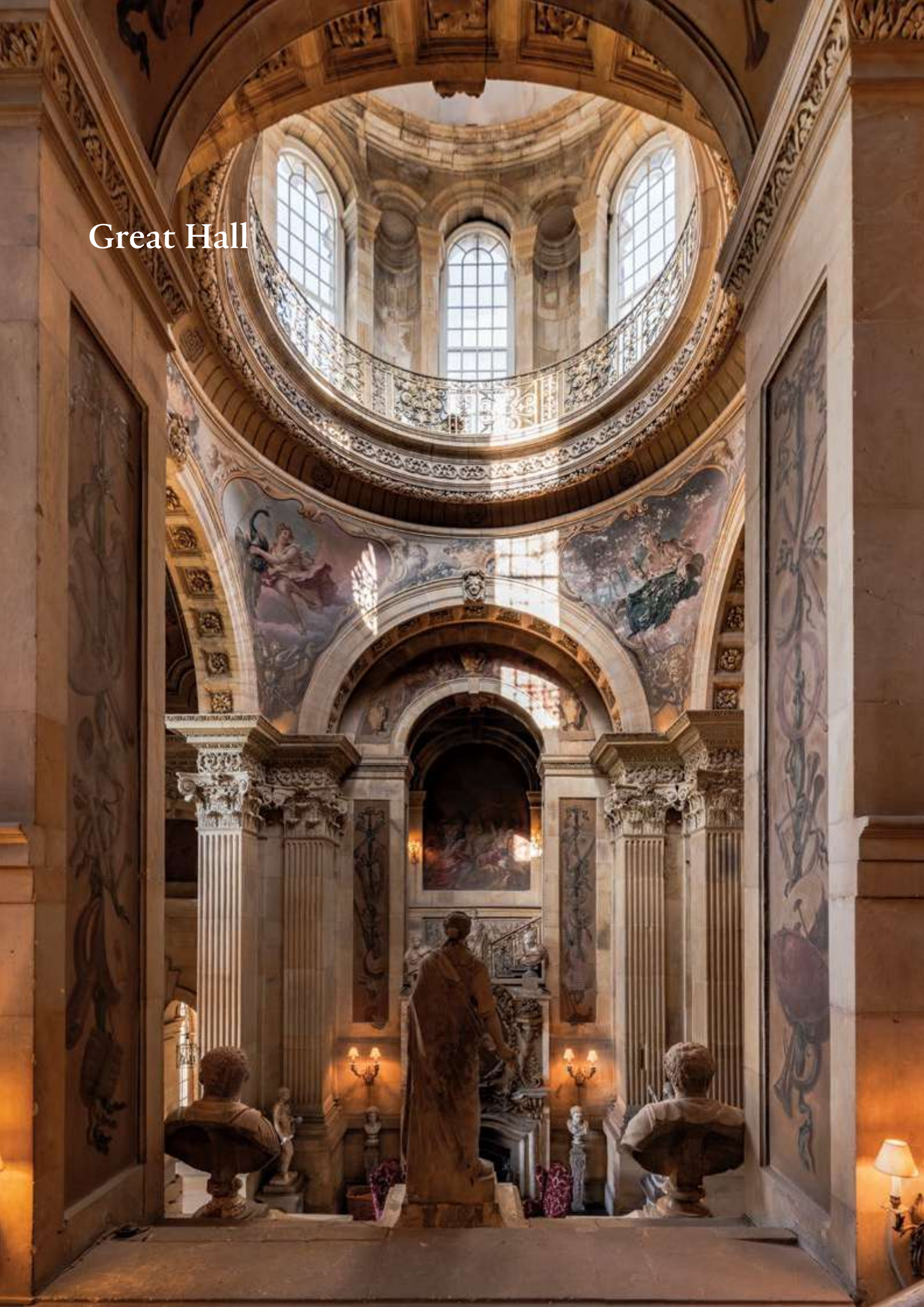
Castle Howard, often cited as the best example of the English Baroque style, was conceived in 1699 by Sir John Vanbrugh and Nicholas Hawksmoor for Charles Howard, 3rd Earl of Carlisle. The Howard family live in the House to this day, with nine generations occupying Castle Howard for over 300 years.

The dramatic interiors house world-renowned art collections, and the grand Gardens offer extensive woodland walks, temples, lakes and fountains.





Great Hall



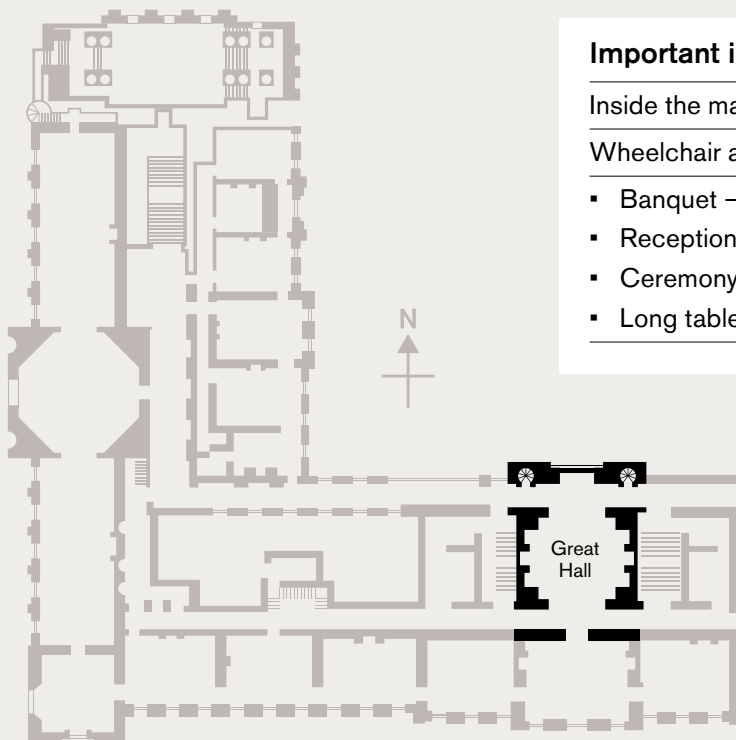


Great Hall

The iconic Great Hall is the crowning masterpiece of architect John Vanbrugh’s design, with the dome rising 70 feet into the air. Light, bright and beautiful, with massive columns topped with carved decoration, painted frescos, statues, and grand staircases, this is the most magnificent of event spaces.

The Great Hall has played host to the stars and film crews *Brideshead Revisited* and *Bridgerton*, and the rock band Arctic Monkeys who shot their Four Out of Five music video from the floor and balconies.

From grand dinners to spectacular drinks receptions, this versatile space can hold a large number of guests, and guarantees the most opulent and memorable of experiences.



Important information

Inside the mansion house

Wheelchair accessible

- Banquet – *maximum 50*
- Reception – *maximum 100*
- Ceremony – *maximum 150*
- Long table – *maximum 30*

Long Gallery



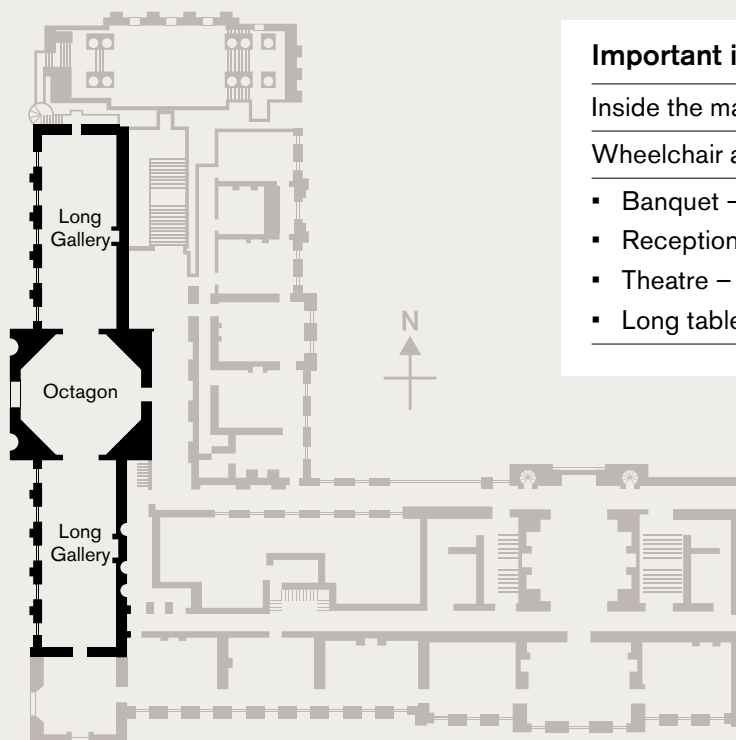
Long Gallery

The Long Gallery, with its grand neoclassical interior, was designed by Charles Heathcote Tatham in the 1810s.

Extending 160 feet in length, one of the longest of its kind in the UK, the Long Gallery sits in the Palladian west wing of the House, with the grand Octagon punctuating the centre.

The Long Gallery is bursting with beautiful art, housing Italian landscapes painted by Paolo Panini and Marco Ricci, and family portraits by many English artists. The present decorative scheme was completed in 2025, with a bespoke colour for the walls with new gilding and marbling.

These magnificent surroundings can comfortably hold a large number of guests for dinners and banquets, surrounded by a world-renowned collection of painting and sculpture.



Important information

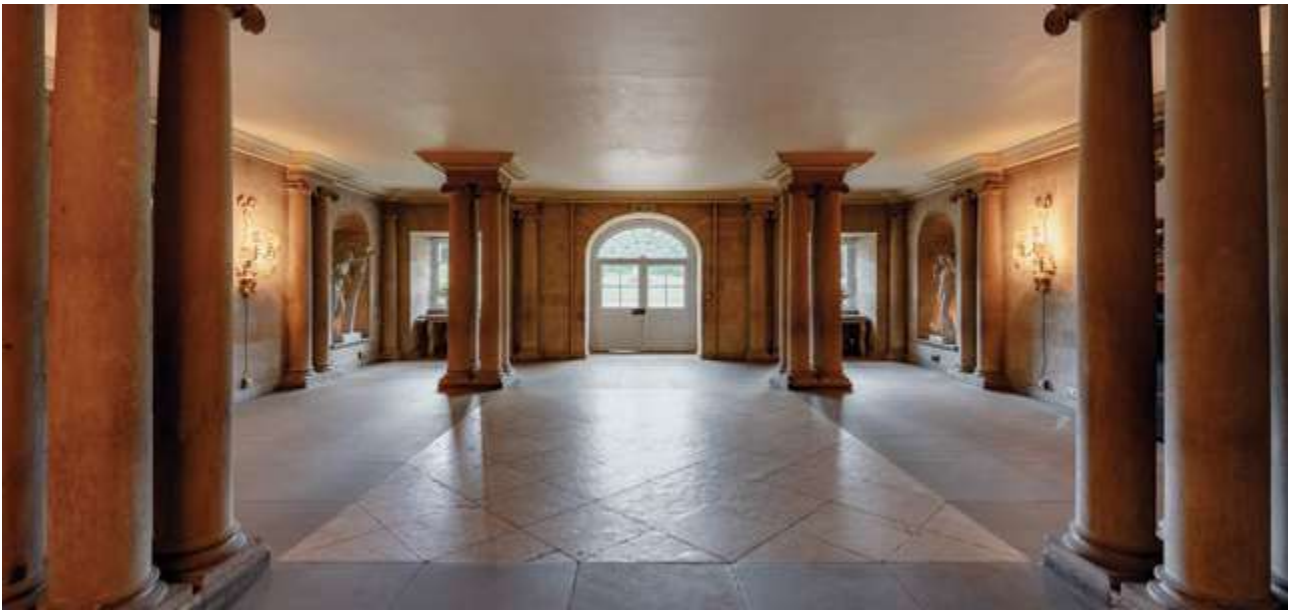
Inside the mansion house

Wheelchair accessible

- Banquet – *maximum 228*
- Reception – *maximum 250*
- Theatre – *maximum 200*
- Long table – *maximum 100*

Grecian Hall

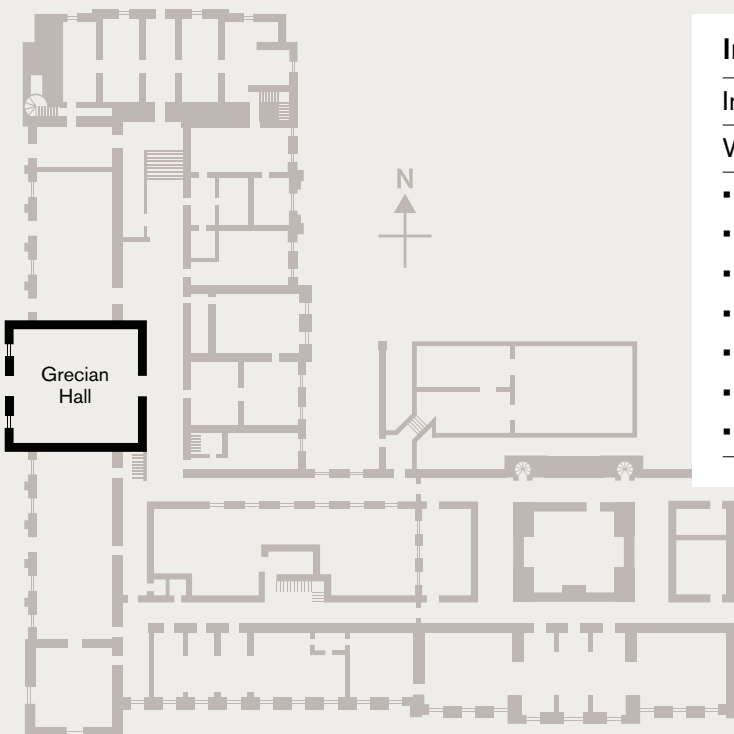




Grecian Hall

The historic Grecian Hall, with columns, sculptures, and view onto the Boar Garden, is the most versatile of event spaces.

The space can comfortably play host to intimate dinners, flexible meetings, and grand drinks receptions, with a cosy fireplace in the winter months and warm light from grand windows in the summer months.



Important information

Inside the mansion house

Wheelchair accessible

- Boardroom – *maximum 24*
- Banquet – *maximum 80*
- Cabaret – *maximum 24*
- Reception – *maximum 100*
- Theatre – *maximum 50*
- Long table – *maximum 24*
- U-shape meeting – *16*

Important information

 Inside the mansion house

 Wheelchair accessible

- Cabaret – *maximum 28*
 - Reception – *maximum 60*
 - Long table – *maximum 40*
-

Grecian Gallery

This atmospheric space sits between the Grecian Hall and Chinese Dining Room and makes for an excellent extension space to house a bar, drinks table or buffet. This space could also be used as a dining location or exhibition space.

Garden Hall

With magnificent views of the Atlas Fountain and Pyramid beyond, the Garden Hall is a grand and versatile space on the principal floor of the mansion house, with Portland stone floors and grand oak doors which lead out onto the South Steps.

Important information

 Inside the mansion house

 Wheelchair accessible

- Banquet – *maximum 30*
 - Reception – *maximum 50*
-



Temple of the
Four Winds



Temple of the Four Winds

The most beautiful of follies at the end of a lawned terrace, with exceptional views over the Howardian Hills, New River Bridge and Howard-family Mausoleum, the Temple of the Four Winds evokes a special magic enriched by its unique architecture and grand interior.

Inspired by Italian architecture, the Temple was built, and used, as a place for refreshment and reading, completed in 1738.



Important information

In the Gardens

- Capacity – *maximum 40*
- Reception – *maximum 30*
- Dining – *maximum 20*



Boar Garden

This lawned Garden is adjacent to the Palladian West Wing of the House, in a sheltered area surrounded by hedging. The space is named after the 1768 statue of the boar which crowns the centre.

Important information

In the Gardens

- Capacity – *maximum 1000*
- Reception – *maximum 1000*
- Dining – *maximum 200*



Walled Garden

The Walled Garden was laid out in the early 18th century as a kitchen garden – visitors were impressed by the pineapples and pomegranates grown in the hothouses. Today, the Walled Garden boasts beautiful blooms and displays, and we serve produce grown in the garden in our dishes in the cafés.

This idyllic location, which looks at its best during the height of summer blooms from May to August, makes for a fragrant, colourful and calm space to host receptions and dinners.

Important information

In the Gardens

- Ceremony or Theatre – 100+
 - Reception – *maximum* 250
 - Dining – *maximum* 75
-



Gardeners House and Private Garden

The 18th-century House and private lawned garden make for a lush and intimate space next to the Castle Howard Walled Garden.

Perfect for outdoor dining, ceremonies or drinks receptions.

Important information

In the Gardens

- Capacity – *maximum 50*
- Reception – *maximum 100*
- Dining – *maximum 50*



Walled Flat

A large lawned area adjacent to the Walled Garden, this sheltered space can be extremely flexible with glamping, dining, ceremony and event opportunities.

This space has previously played host to outdoor cinema events, wellness festivals, yurt villages and outdoor receptions.

Important information

In the Gardens

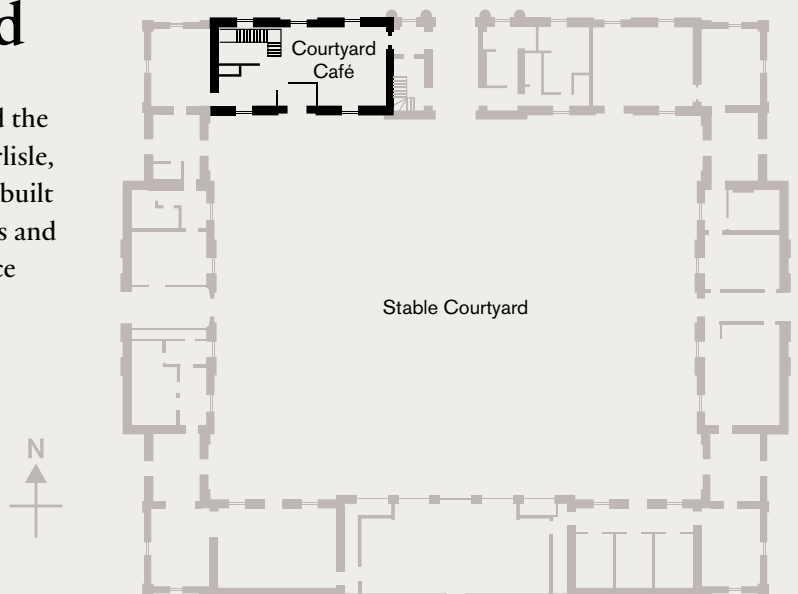
- Ceremony – *500+*
- Reception – *1000*
- Theatre – *500+*
- Dining – *200+*





The Stable Courtyard

Prolific Yorkshire architect, John Carr, designed the stables at Castle Howard for the 5th Earl of Carlisle, which were built in the 1780s. The stables were built originally to house over 40 horses, five carriages and their grooms. Today, they are the grand entrance to the Gardens, and house the Farm Shop and Courtyard Café.



Courtyard Café

The Café has two levels, upper and lower, and a large outdoor seating area.

Important information

At the Courtyard

Lower-level wheelchair accessible

- Reception – *maximum 60*
- Theatre – *maximum 60*
- Dining – *maximum 40*



Courtyard Exterior

Atmospheric cobble stones and flags surrounded by historic stable buildings. A lovely place to spend time on a sunny day.

Important information

At the Courtyard

- Ceremony – *maximum 200*
- Reception – *maximum 400*
- Theatre – *maximum 200*
- Dining – *maximum 200*



Dining and catering

From grand dinners to barbecues and buffets, the Castle Howard in-house team, lead by Executive Head Chef Nathan Richardson Kelly, can create seasonal menus for your event.

Alternatively, we can facilitate your preferred caterer in our large in-house kitchen.

Tours and experts

Enhance your conference or private event with bespoke guided tours led by our expert teams. From filming location guided tours and 'behind the scenes' tours of the House, to tractor trailer tours of the wider Estate, we can tailor an experience to your interests.

Get in touch

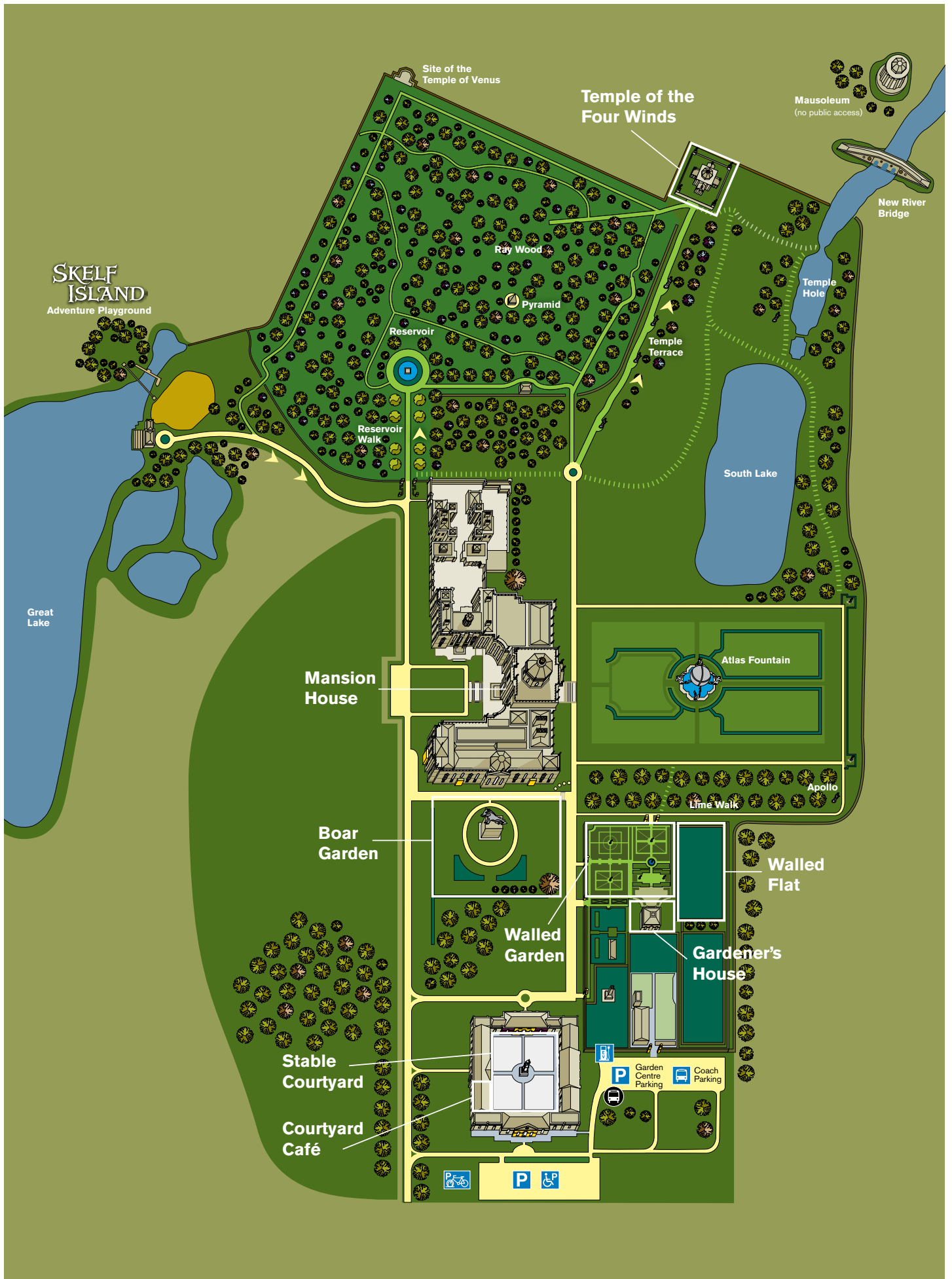
Contact our expert team who can help plan and deliver your event, and create a bespoke package to suit your needs.

events@castlehoward.co.uk
castlehoward.co.uk/hospitality



Executive Head Chef Nathan Richardson Kelly





CASTLE HOWARD

